



Wi-Fi in hotel complex

♥ Customer profile:

Company: Tourism hotel complexes "Izmailovo", hotels Gamma and Delta (3 and 4 stars)

Sector: Hotel business

Location: Moscow, Russia

Scope of works: 2 000 rooms, 360 access points

♥ INTRODUCTION

"Izmailovo" hotel complexes were constructed to accommodate guests and participants of the 1980 Summer Olympics in Moscow. Now they rank in the top 5 largest hotels in the world. Gamma 3* and Delta 4* hotels are business and conference hotels with a highly-developed infrastructure, that builds up favorable conditions for combining business and leisure. Each hotel complex includes rooms of such categories as standard, business, first class and luxury.

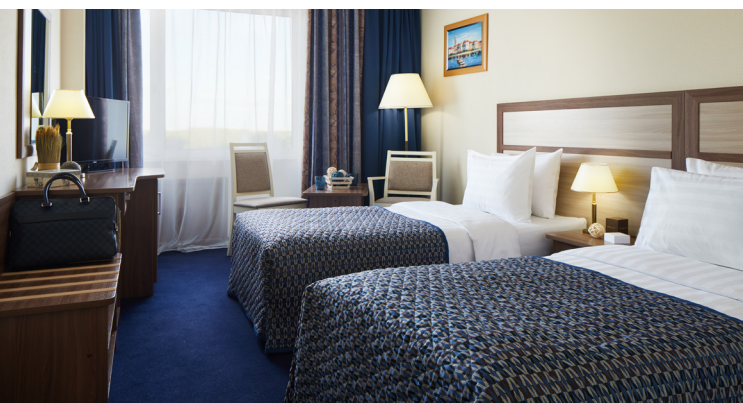
The territory of the complexes resembles a small city with bars, restaurants, Internet cafes, bowling, billiards, beauty salon, fitness center, laundry, dry cleaner's, pharmacy and other important facilities. Gamma and Delta hotels are located within 5-minute walk from Izmaylovsky Park and the Partizanskaya metro station.

"Izmaylovo" stands for client-oriented hotel complexes, accommodating 500 000 guests from all over the world annually. Moreover, the complexes develop dynamically in accordance with modern market trends and combine high-quality service standards and the best hospitality practices.



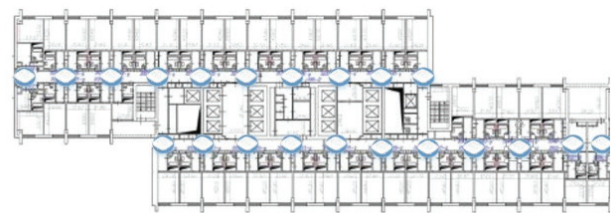
▼ CHALLENGE

Internet access is the critical component in people's lives, therefore Wi-Fi absence in hotels and restaurants can result in refusal from the organization services. Since the "Izmailovo" hotel complexes keep up with the times, management had to equip the rooms and other premises with Internet access.

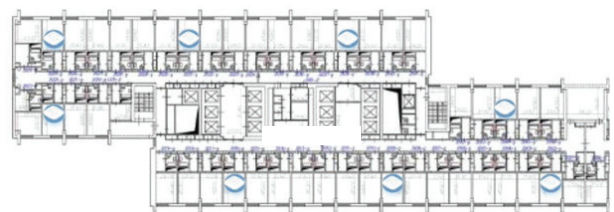


The management set the following challenges:

- To provide a reliable wired and wireless network for guests and staff;
- To provide Wi-Fi in the rooms, which would guarantee a positive feedback on the service;
- To provide simple centralized management and affordable network maintenance.



Точки в коридоре



Точки в номерах

Location of access points

▼ SOLUTION

Initially, 2 options for access points' installation were considered: in the corridors and inside the rooms. The radio survey by TP-Link engineers showed that the access point located in the room covers more rooms than the access point located in the corridor. Thus, the project costs were significantly reduced. Furthermore, compared with competitors, TP-Link access points with similar coverage rates have shown better connection speed. To choose a specific solution, the administration of hotel complexes tested equipment of different vendors in the lobby. As a result, TP-Link equipment was selected: CAP1200 access points, T2600G-28MPS switches and AC500 controllers.



CAP1200



T2600G-28MPS



AC500

▼ RESULT

The TP-Link Wi-Fi enterprise solution has provided the management of the “Izmailovo” hotel complexes with a Wi-Fi network for employees and guests.

Currently TP-Link employees, as vendor representatives, provide full after-sales support to the hotels, as well as recommendations on the equipment setup.

As a result, the requirements for network coverage have been met, whereas the necessary services required by the management work properly.